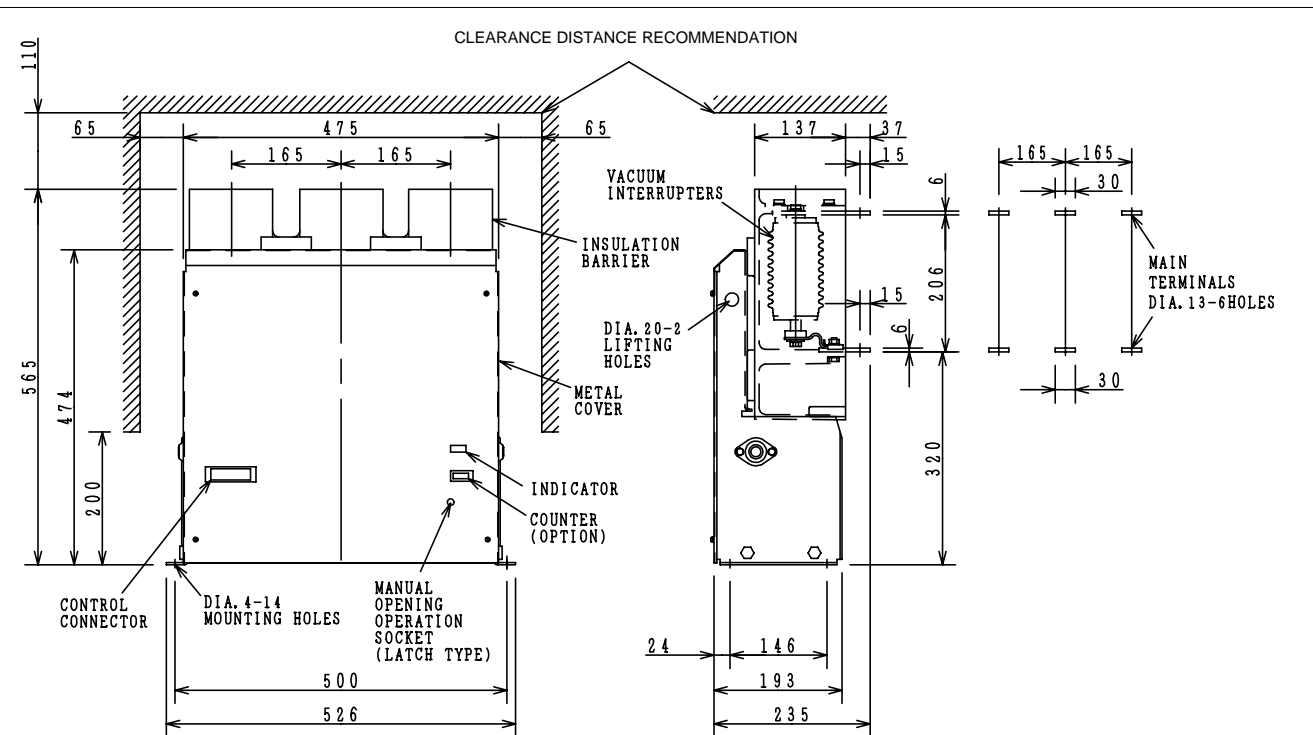
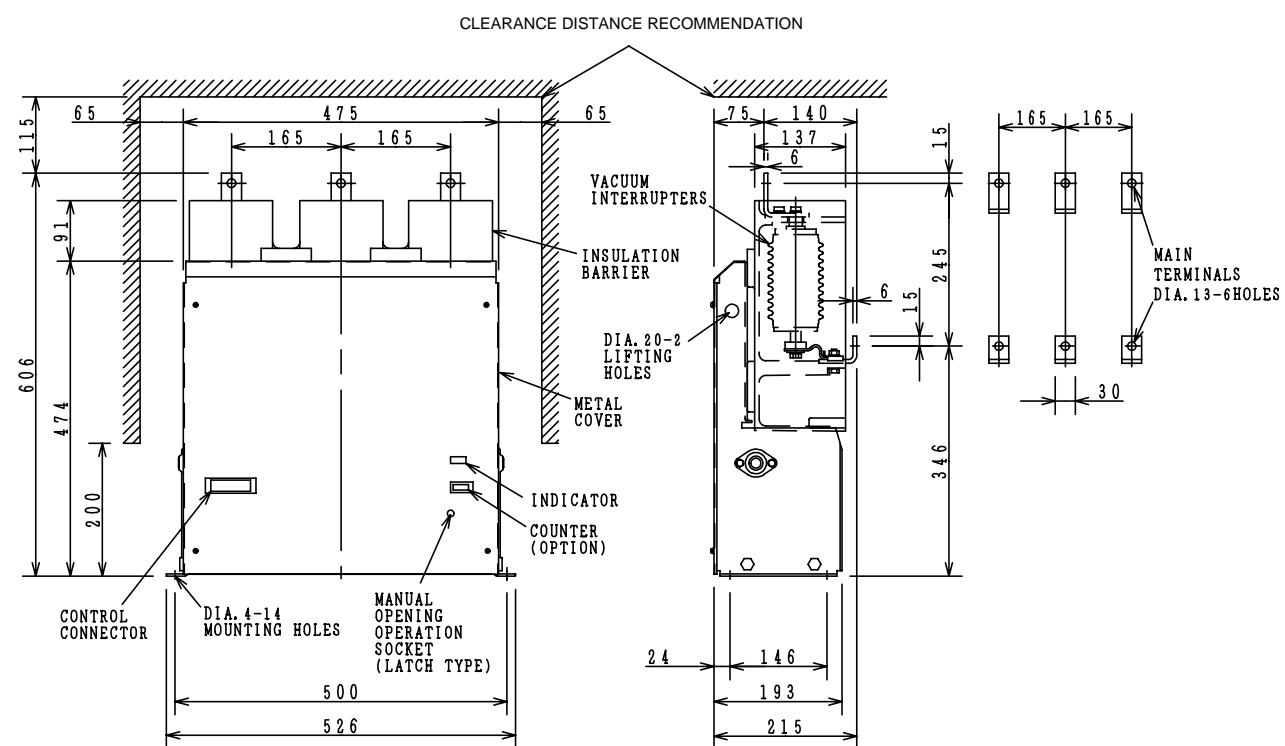


TOSHIBA

OUTLINE DIMENSIONS



TYPE CV-10HA(L) & CV-10HB(L)
HORIZONTAL MAIN TERMINAL



TYPE CV-10HA(L)-1 & CV-10HB(L)-1
VERTICAL MAIN TERMINAL

NEW MODEL HIGH VOLTAGE VACUUM CONTACTORS

12/15kV-320A-5/4kA

CV-10HA(L): MOTOR & TRANSFORMER APPLICATION
CV-10HB(L): CAPACITOR APPLICATION



TOSHIBA OFFERS NEW HIGH VOLTAGE VACUUM CONTACTORS WITH SUPERIOR FEATURES

RATINGS AND CHARACTERISTICS

Type Form	CV-10HA	CV-10HAL	CV-10HB	CV-10HBL	
Operating Mechanism	Non-latched	Latched	Non-latched	Latched	
Standard	IEC60470 (2000)				
Rated Voltage (Ur)	12/15 kV		12kV		
Rated Insulation Level	Power Frequency Voltage 28 (42) kV				
	Lightning Impulse Voltage 75 kV (To earth, Between poles)				
Rated Operational Current (Ie)	320 A				
Rated Frequency (fr)	50/60 Hz				
Rated Short-time Withstand Current (Ik)	5000A — 1s				
Rated Peak Withstand Current (Ip)	12500A				
Rated Duties	Class	Class 300	Class 120	Class 300	Class 120
	Operations/Hour	300	120	300	120
	On Load Factor	40%			
Rated Load and Overload Characteristics	Rated making capacity	3.2 kA (Ie × 10)			
		"C" —10s × 100 times			
	Rated breaking capacity	2.56 kA (Ie × 8)			
	"CO"—30s × 25 times				
Withstand Overload Current (Ik)	8 kA-1s				
	[15 × Ie-1s (4.8kA-1s) , 6 × Ie-30s (1.92kA-30s)]				
Rated Supply Voltage of Control Circuit (Ua)	100~240VAC/100~220VDC				
Thermal Current (Ith)	450A				
Short-circuit Making and Breaking Current	5/4kA		4kA		
	Duties "O"—3min.—"CO"—3min.—"CO"				
Mechanical Endurance	(Thousand)	250	250	250	250
Electrical Endurance	(Thousand)	100	100	100	100
	Category AC3	Making: 6 × Ie , Breaking: 1X Ie			
Maximum load	Motor (kW)	3500		—	
	Transformer (kVA)	4500		—	
	Capacitor (kvar)	—		5000	
Auxiliary Switches	Contact arrangement	4NO-2NC	2NO-1NC	4NO-2NC	2NO-1NC
	Life (Thousand)	100			
Dimensions (mm)	Between Phases	165			
	W × D × H	526 × 235 × 565			
	Mounting Holes	W500 × D146 (Dia 14 - .4Holes)			
Main Circuit Terminals	Horizontal or Vertical				
Front Cover (Face Plate)	Metal Cover				
Control Circuit	Driving method	Electronic Control Device(Drive Unit)			
	Connection	100~240VAC/100~220VDC Control Connector (AMP3200)			
Operating Current (A) (at AC100v)	Closing	6.0			
	Holding/Tripping	0.7	4.0	0.7	4.0
Options	Counter (Mechanical Type)				
Accessories	Control Cable (1.25mm ² × 1m)				

1. COMPACT AND LIGHT WEIGHT

Dimension: 526W×565H×235D

Weight: 43kg (44kg)

() : Latched Type

2. SAFETY DESIGN

Metal Front Cover

One touch Control Circuit Connector

3. NO EXTERNAL SURGE PROTECTION REQUIRED

Low Surge Contact Material: Silver Alloy is used for Motor Switching Application.

4. CAPACITOR APPLICATION

Special Contact Material is used for Capacitor Switching Application

5. LONG LIFE AND HIGH FREQUENCY OF OPERATION

"100,000" Electrical Life per AC3 Category
300 Operations/hour Duty (120 for Latched type)

6. HIGH WITHSTAND VOLTAGE

42kV per GB Standard

Creepage Distance: 220mm for Vacuum Interrupters

7. VERSATILE OPTIONS

Non-latched Type

Latched Type

Operation Number Counter

Vertical or Horizontal Main Terminal

8. LOW CONTROL POWER CONSUMPTION

Electronic Control Device (Drive Unit)

Wide Control Voltage: 100-240VAC and 100-220VDC

9. MEETS LATEST IEC STANDARD

IEC 60470 2000

Positive Driven Auxiliary Contact